

Regular SELC 2018 ELICOS

All amounts are Australian Dollars (AUD) and include GST (where applicable)



Weekly Tuition fees for all ELICOS Courses

2-8 weeks	\$400 p/ week
9-16 weeks	\$390 p/ week
17-24 weeks	\$380 p/ week
25-39 weeks	\$360 p/ week
40+ weeks	\$350 p/ week
Cambridge: FCE, CAE and CPE	\$400 p/ week
Part Time - Daytime General English Only (15 hrs per week – Not applicable for student visa applicants)	\$350 p/ week

Please note, all SELC ELICOS Programs are offered at Bondi only.
All prices are subject to change, SELC reserves the right to amend prices at any time. Valid from 01/01/2018.

COURSES			2018 START DATES	
General Intensive English (2 - 52 wks) <i>Part-time (15 hrs/wk) Full-time (20 hrs/wk + 5 hrs Optional Tutorials and Workshops)</i>	 All levels	 Elementary to Upper Intermediate levels	02 Jan 29 Jan 26 Feb 26 Mar 23 Apr 21 May 18 Jun	16 Jul 13 Aug 10 Sep 08 Oct 05 Nov 03 Dec
IELTS Preparation (4 - 24 wks) <i>(20 hrs/wk 5 hrs Optional Tutorials and Workshops)</i>	 Academic Training	 General Training		
English for Customer Service Communication (4 wks) <i>(20 hrs/wk 5 hrs Optional Tutorials and Workshops)</i>				
Academic English Program (AEP) (4 - 36 wks) <i>(20 hrs/wk + 5 hrs Optional Tutorials and Workshops)</i>				
Cambridge Test Preparation (10 to 12 wks) <i>Intensive (20 hrs/wk + 5 hrs Optional Self-Study and Workshops)</i>	 FCE, CAE & CPE Exam is Compulsory	 FCE Exam is Optional		
			02 Jan - 16 Mar 11 wks (FCE & CAE) 02 Jan - 09 Mar 10 wks (CPE) 19 Mar - 08 Jun 12 wks (FCE, CAE & CPE) 18 Jun - 24 Aug 10 wks (FCE) 10 Sep - 30 Nov 12 wks (FCE, CAE & CPE)	

ENROLMENT FEE		MATERIAL FEE	
\$250		\$15 per week (Max \$360)	
CAMBRIDGE EXAM FEE*		EXTERNAL BARISTA TRAINING COURSE (compulsory as part of English for Customer Service Communication)	
\$330 - FCE & CAE \$350 - CPE <i>*To be paid in the first week of Cambridge course (Compulsory for daytime option only)</i>		\$180	

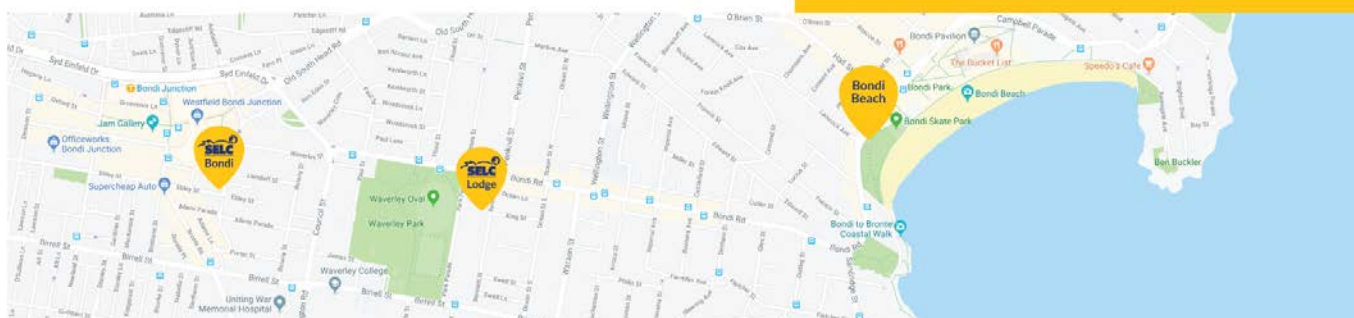
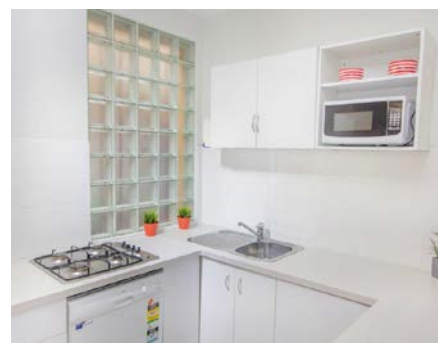
Accommodation Rates 2018

PLACEMENT FEE	\$250
Second placement fee (when changing accommodation provider)	\$125
Second placement fee (when extending the same accommodation provider)	\$65
AIRPORT MEETING AND TRANSFER ON ARRIVAL	\$145 per person

HOMESTAY <i>Weekly prices</i> <i>2 wks minimum stay</i>	Half Board (18 years of age and over)	\$294
	Half Board (under 18 years of age with guardianship)	\$343
	Room and Facilities (18 years of age and over only)	\$231

SELC Bondi Lodge <i>Weekly prices</i> <i>4 wks minimum stay</i>	Single room (private bathroom)	\$630 per room
	Single room (shared bathroom)	\$392 per room
	Twin/Double room (private bathroom)	\$315 per person
	Twin/Double room (shared bathroom)	\$280 per person

Complimentary Tea and coffee provided daily at the Lodge. Shared Kitchen and Laundry facilities.



[11 Bennett Street, Bondi, Sydney](https://www.google.com/maps/place/11+Bennett+Street,+Bondi,+Sydney)